

A woman with long, wavy brown hair is sitting on a wooden floor, leaning against a large window. She is wearing a thick, brown, textured knit sweater and is holding a small, dark book open, reading it. The window has a wooden frame and a small rectangular pane at the top. The view outside the window is a snowy landscape with some buildings in the distance. The lighting is soft and warm, coming from the window.

**LOLITAS&L**

**FALL-WINTER  
2021/22**

# C O A T

A coat is a garment worn on the upper body by either gender for warmth or fashion.  
Coats typically have long sleeves and are open down the front.



Ref #9002CO

Composition  
50%WO 50%PL

Sizes  
S-M-L-XL

Colours  
02 BLACK  
05 BISCOTTO

Made In China



#02

Black



#05

Biscotto



# C O A T

A coat is a garment worn on the upper body by either gender for warmth or fashion.  
Coats typically have long sleeves and are open down the front.



Ref #9003Co

Composition  
80%VI 13%PA 7%EL

Sizes  
S-M-L-XL

Colours  
02 BLACK / REVERSIBLE

Made In China



#02

Black / Reversible



# C O A T

A coat is a garment worn on the upper body by either gender for warmth or fashion.  
Coats typically have long sleeves and are open down the front.



Ref #9004Co

Composition  
80%VI 13%PA 7%EL

Sizes  
S-M-L-XL

Colours  
02 BLACK

Made In China

#02

Black / Two pieces



# C O A T

A coat is a garment worn on the upper body by either gender for warmth or fashion.  
Coats typically have long sleeves and are open down the front.



Ref #5005Co

Composition  
60%PC 20%WO 20%VI

Sizes  
S-M-L-XL

Colours  
10 BLU  
32 CAPUCCINO

Made In Italy





#10

Blu



#32

Capuccino



# C O A T

A coat is a garment worn on the upper body by either gender for warmth or fashion.  
Coats typically have long sleeves and are open down the front.



Ref #7001Co

Composition  
50%PC 30%WO 20%VI

Sizes  
S-M-L-XL

Colours  
02 BLACK  
23 CREAM

Made In Italy



#02

Black



#23

Cream





# C O A T

A coat is a garment worn on the upper body by either gender for warmth or fashion.  
Coats typically have long sleeves and are open down the front.



Ref #9000Co

Composition  
100%PL

Sizes  
S-M-L-XL

Colours  
02 BLACK/ REVERSIBLE

Made In China



#02

Black / Reversible



# C O A T

A coat is a garment worn on the upper body by either gender for warmth or fashion.  
Coats typically have long sleeves and are open down the front.

Ref #9005CO



Composition  
100%PL

Sizes  
S-M-L-XL

Colours  
02 BLACK  
50 BLACK&WHITE

Made In China



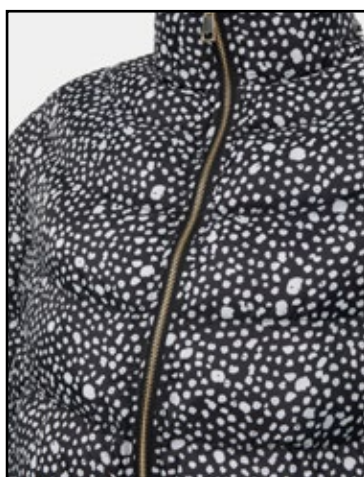
#02

Black



#50

Black&White



# C O A T

A coat is a garment worn on the upper body by either gender for warmth or fashion.  
Coats typically have long sleeves and are open down the front.



Ref #9009Co

Composition  
100%PL

Sizes  
S-M-L-XL

Colours  
50 BLACK&WHITE / REVERSIBLE

Made In China



#50

Black&White /Reversible



# C O A T

A coat is a garment worn on the upper body by either gender for warmth or fashion.  
Coats typically have long sleeves and are open down the front.



Ref #9010Co

Composition  
100%PA

Sizes  
S-M-L-XL

Colours  
02 BLACK / REVERSIBLE

Made In China

#02

Black / Reversible



# C O A T

A coat is a garment worn on the upper body by either gender for warmth or fashion. Coats typically have long sleeves and are open down the front.



Ref #9006JK

Composition  
100%PU

Sizes  
S-M-L-XL

Colours  
02 BLACK / TWO PIECES

Made In China



#02

Black / Jacket + Furry Vest



# C O A T

A coat is a garment worn on the upper body by either gender for warmth or fashion. Coats typically have long sleeves and are open down the front.



Ref #9007JK

Composition  
100%PA

Sizes  
S-M-L-XL

Colours  
02 BLACK / Reversible

Made In China

#02

Black / Reversible





# C O A T

A coat is a garment worn on the upper body by either gender for warmth or fashion.  
Coats typically have long sleeves and are open down the front.



Ref #9015JK

Composition  
100%PL

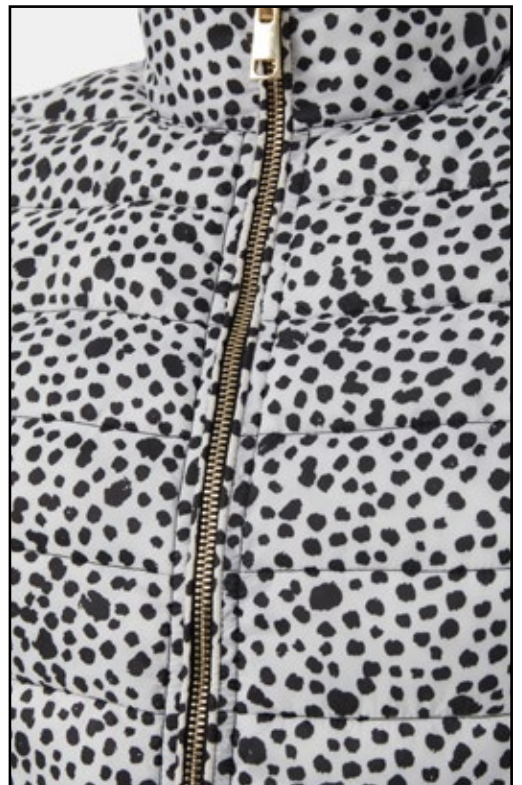
Sizes  
S-M-L-XL

Colours  
50 BLACK&WHITE / REVERSIBLE

Made In China

#02

Black&White / Reversible





# D R E S S

It consists of a top piece that covers the torso and hangs down over the legs. A dress can be any one-piece garment containing a skirt of any length, and can be formal or casual.



Ref #2020DR

Composition  
50%CO 50%PL

Sizes  
S-M-L-XL-XXL

Colours  
05 BISCOTTO  
21 ANTRACITA

Made In Portugal



#05

Biscotto



#2I

Antracita



# D R E S S

It consists of a top piece that covers the torso and hangs down over the legs. A dress can be any one-piece garment containing a skirt of any length, and can be formal or casual.



Ref #3010DR

## Composition

50%PC 30%PL 10%WO 10%VI

## Sizes

S-M-L-XL

## Colours

08 TERRA

33 PETROL BLU

Made In Italy



#08

Terra



#33

Petrol Blu





# D R E S S

It consists of a top piece that covers the torso and hangs down over the legs. A dress can be any one-piece garment containing a skirt of any length, and can be formal or casual.



Ref #2016DR

Composition  
100%CO

Sizes  
S-M-L-XL-XXL

Colours  
17 SKYBLU  
50 BLACK&WHITE

Made In Portugal



#17

SkyBlu



#50

Black&White



# D R E S S

It consists of a top piece that covers the torso and hangs down over the legs. A dress can be any one-piece garment containing a skirt of any length, and can be formal or casual.



Ref #2003DR

Composition  
50%CO 50%PL

Sizes  
S-M-L-XL-XXL

Colours  
04 MILK  
21 ANTRACITA

Made In Portugal



#04

Milk



#2I

Antracita





# D R E S S

It consists of a top piece that covers the torso and hangs down over the legs. A dress can be any one-piece garment containing a skirt of any length, and can be formal or casual.



Ref #2014DR

Composition  
70%VI 25%PL 5%EA

Sizes  
S-M-L-XL-XXL

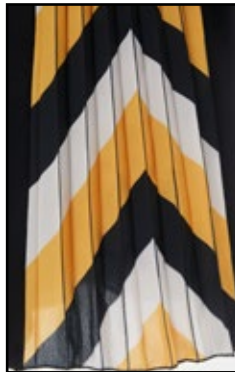
Colours  
06 SUN  
09 BLU ROYAL  
19 GERANIUM PINK

Made In Portugal



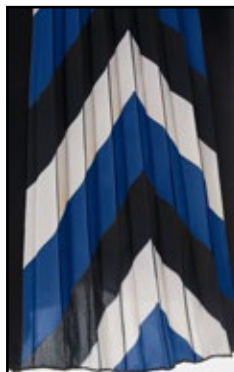
#06

Sun



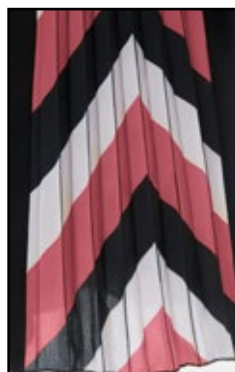
#09

Blue Royal



#19

Geranium Pink



# D R E S S

It consists of a top piece that covers the torso and hangs down over the legs. A dress can be any one-piece garment containing a skirt of any length, and can be formal or casual.



Ref #2031DR

Composition  
50%CO 50%PL

Sizes  
S-M-L-XL-XXL

Colours  
50 BLACK&WHITE

Made In Portugal

#50

Black&White





# D R E S S

It consists of a top piece that covers the torso and hangs down over the legs. A dress can be any one-piece garment containing a skirt of any length, and can be formal or casual.



Ref #2034DR

Composition  
92%PL 8%EL

Sizes  
S-M-L-XL-XXL

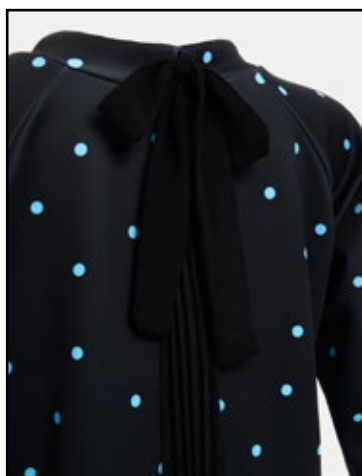
Colours  
33 PETROL BLU  
102 LOGO

Made In Portugal



#33

Petrol Blu



#IO2

Logo



# D R E S S

It consists of a top piece that covers the torso and hangs down over the legs. A dress can be any one-piece garment containing a skirt of any length, and can be formal or casual.



Ref #2042DR

Composition  
50%CO 50%PL

Sizes  
S-M-L-XL-XXL

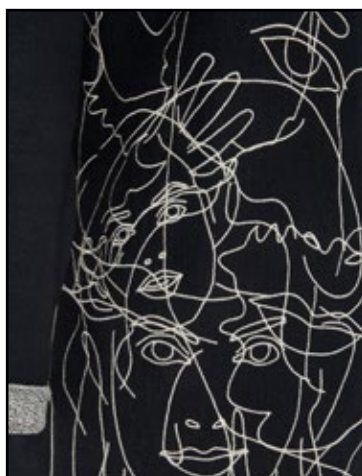
Colours  
02 BLACK  
11 STONEWASH

Made In Portugal



#02

Black



#II

StoneWash





# D R E S S

It consists of a top piece that covers the torso and hangs down over the legs. A dress can be any one-piece garment containing a skirt of any length, and can be formal or casual.



Ref #2046DR

Composition  
70%VI 25%PL 5%EA

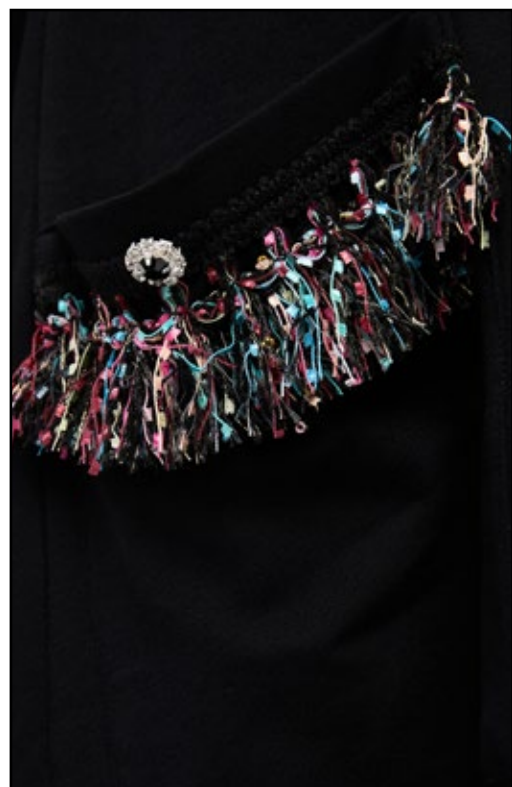
Sizes  
S-M-L-XL-XXL

Colours  
02 Black

Made In Portugal

#02

Black



# D R E S S

It consists of a top piece that covers the torso and hangs down over the legs. A dress can be any one-piece garment containing a skirt of any length, and can be formal or casual.



Ref #2048DR

Composition  
50%CO 50%PL

Sizes  
S-M-L-XL-XXL

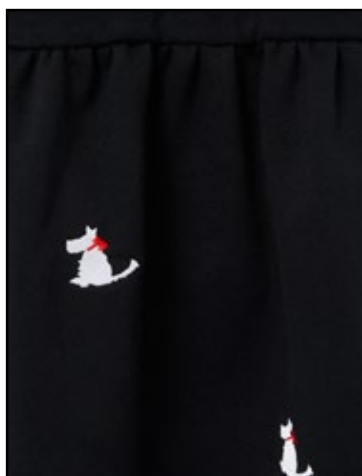
Colours  
02 BLACK  
05 BISCOTTO

Made In Portugal



#02

Black



#05

Biscotto





# D R E S S

It consists of a top piece that covers the torso and hangs down over the legs. A dress can be any one-piece garment containing a skirt of any length, and can be formal or casual.



Ref #3021DR

Composition  
50%VI 28%PA 22%PBT

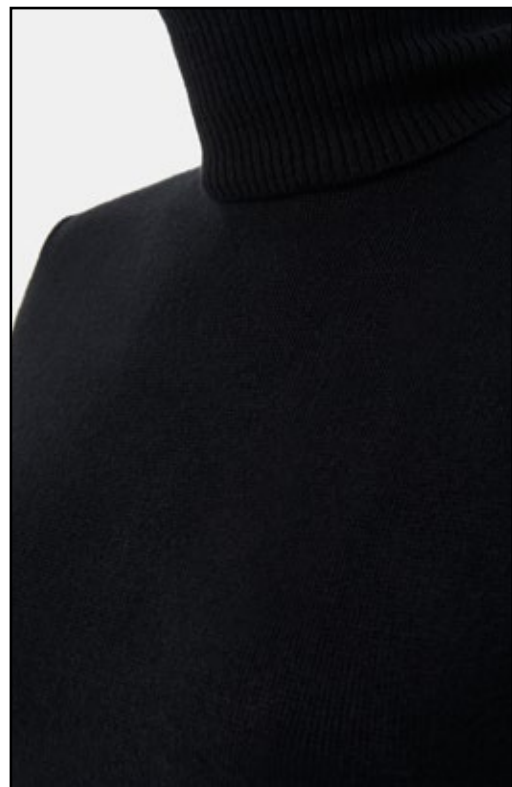
Sizes  
S-M-L-XL

Colours  
02 BLACK

Made In Italy

#O2

Black



# D R E S S

It consists of a top piece that covers the torso and hangs down over the legs. A dress can be any one-piece garment containing a skirt of any length, and can be formal or casual.



Ref #3024DR

Composition  
50%VI 28%PA 22%PBT

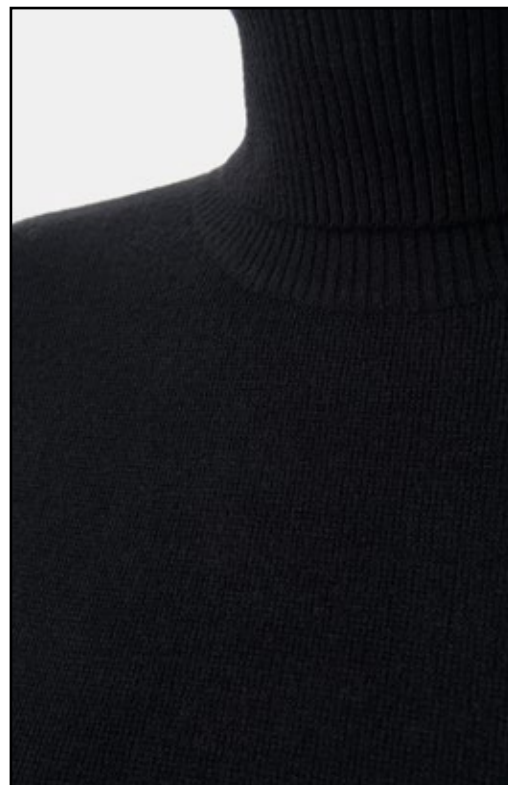
Sizes  
S-M-L-XL

Colours  
02 BLACK

Made In Italy

#O2

Black





# D R E S S

It consists of a top piece that covers the torso and hangs down over the legs. A dress can be any one-piece garment containing a skirt of any length, and can be formal or casual.



Ref #7007DR

## Composition

52%VI 28%PL 20%PA

## Sizes

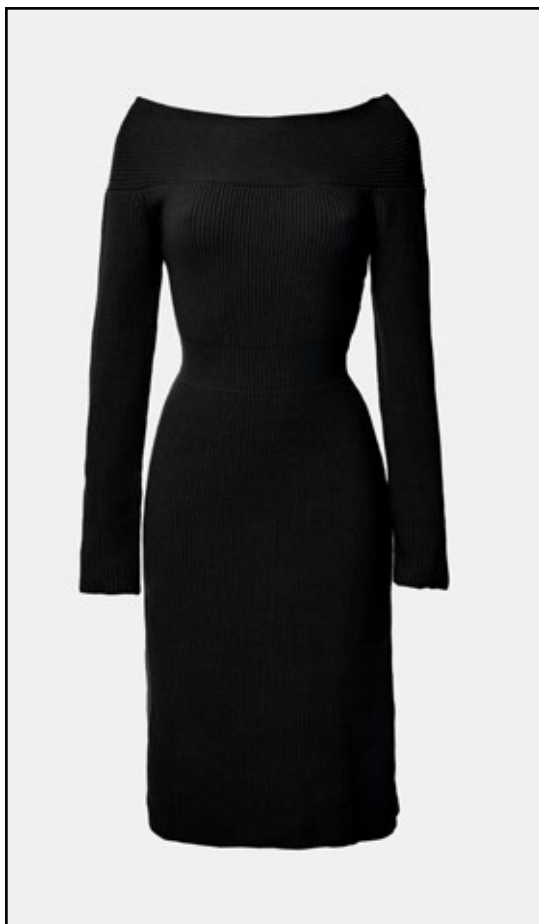
S-M-L-XL

## Colours

02 BLACK

23 CREAM

Made In Italy



#02

Black



#23

Cream



# D R E S S

It consists of a top piece that covers the torso and hangs down over the legs. A dress can be any one-piece garment containing a skirt of any length, and can be formal or casual.



Ref #4006DR

Composition  
76%CO 24%PL

Sizes  
S-M-L-XL

Colours  
02 BLACK  
11 STONEWASH

Made In Italy



#02

Black



#II

StoneWash





# D R E S S

It consists of a top piece that covers the torso and hangs down over the legs. A dress can be any one-piece garment containing a skirt of any length, and can be formal or casual.



Ref #6008DR

Composition  
100% CO

Sizes  
S-M-L-XL-XXL

Colours  
12 AQUAMARINE

Made In Portugal

#I2

Aquamarine



# D R E S S

It consists of a top piece that covers the torso and hangs down over the legs. A dress can be any one-piece garment containing a skirt of any length, and can be formal or casual.



Ref #4011DR

Composition  
49%CO 48%PC 3%EA

Sizes  
S-M-L-XL

Colours  
02 BLACK  
11 STONEWASH

Made In Italy



#02

Black



#II

StoneWash





# D R E S S

It consists of a top piece that covers the torso and hangs down over the legs. A dress can be any one-piece garment containing a skirt of any length, and can be formal or casual.



Ref #5004DR

Composition  
60%PC 20%WO 20%VI

Sizes  
S-M-L-XL

Colours  
02 BLACK  
32 CAPUCCINO

Made In Italy



#02

Black



#32

Capuccino



# D R E S S

It consists of a top piece that covers the torso and hangs down over the legs. A dress can be any one-piece garment containing a skirt of any length, and can be formal or casual.



Ref #9012DR

Composition  
100%PU

Sizes  
S-M-L-XL

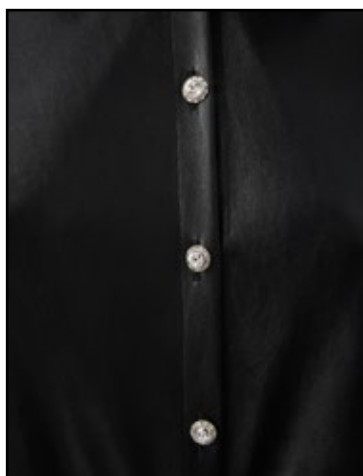
Colours  
02 BLACK  
32 CAPUCCINO

Made In Italy



#02

Black



#32

Capuccino





# D R E S S

It consists of a top piece that covers the torso and hangs down over the legs. A dress can be any one-piece garment containing a skirt of any length, and can be formal or casual.



Ref #9013DR

Composition  
100%PL

Sizes  
S-M-L-XL

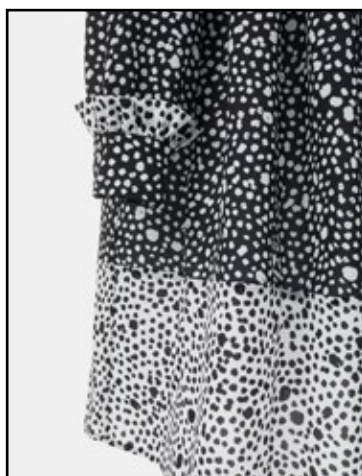
Colours  
50 BLACK&WHITE  
103 ZEBRA

Made In Italy



#50

Black&White



#103

Zebra





# D R E S S

It consists of a top piece that covers the torso and hangs down over the legs. A dress can be any one-piece garment containing a skirt of any length, and can be formal or casual.



Ref #9014DR

Composition  
100% PL

Sizes  
S-M-L-XL

Colours  
50 BLACK&WHITE

Made In Italy

#50

Black&White





# D R E S S

It consists of a top piece that covers the torso and hangs down over the legs. A dress can be any one-piece garment containing a skirt of any length, and can be formal or casual.



Ref #2045DR

Composition  
67%PL 30%CO 3%EA

Sizes  
S-M-L-XL-XXL

Colours  
21 ANTRACITA

Made In Portugal

#2I

Antracita



# J A C K E T

A jacket is a garment for the upper body, usually extending below the hips. A jacket typically has sleeves, and fastens in the front or slightly on the side

Ref #3015CA



Composition  
50%PC 30%PL 10%WO 10%VI

Sizes  
S-M-L-XL

Colours  
02 BLACK  
23 CREAM

Made In Italy



#02

Black



#23

Cream





# J A C K E T

A jacket is a garment for the upper body, usually extending below the hips. A jacket typically has sleeves, and fastens in the front or slightly on the side



Ref #7011JK

Composition  
52%VI 28%PL 20%PA

Sizes  
S-M-L-XL

Colours  
23 CREAM

Made In Italy

#23

Cream





# J A C K E T

A jacket is a garment for the upper body, usually extending below the hips. A jacket typically has sleeves, and fastens in the front or slightly on the side



Ref #3009CA

## Composition

50%PC 30%PL 10%WO 10%VI

## Sizes

S-M-L-XL

## Colours

02 BLACK

21 ANTRACITA

Made In Italy



#02

Black



#2I

Antracita





# J A C K E T

A jacket is a garment for the upper body, usually extending below the hips. A jacket typically has sleeves, and fastens in the front or slightly on the side



Ref #3012JK

## Composition

50%PC 30%PL 10%WO 10%VI

## Sizes

S-M-L-XL

## Colours

02 BLACK

08 TERRA

Made In Italy



#02

Black



#08

Terra



# J A C K E T

A jacket is a garment for the upper body, usually extending below the hips. A jacket typically has sleeves, and fastens in the front or slightly on the side



Ref #3022JK

Composition  
50%PC 30%PL 10%WO 10%VI

Sizes  
S-M-L-XL

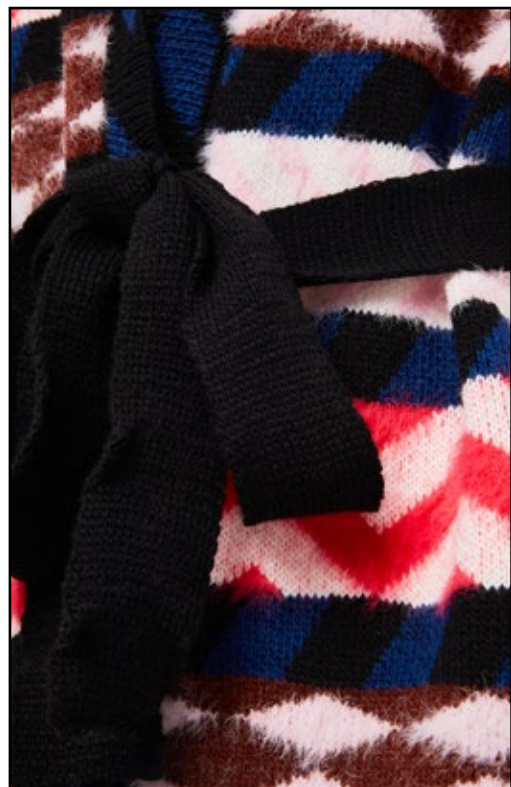
Colours  
22 MULTICOLOR

Made In Italy



#22

Multicolor





# J A C K E T

A jacket is a garment for the upper body, usually extending below the hips. A jacket typically has sleeves, and fastens in the front or slightly on the side



Ref #4010JK

Composition  
49%CO 48%PC 3%EA

Sizes  
S-M-L-XL

Colours  
02 BLACK  
11 STONEWASH

Made In Italy



#02

Black



#II

StoneWash





# J A C K E T

A jacket is a garment for the upper body, usually extending below the hips. A jacket typically has sleeves, and fastens in the front or slightly on the side



Ref #5002JK

Composition  
74%PC 26%PL

Sizes  
S-M-L-XL

Colours  
09 BLU ROYAL

Made In Italy

#09

Blu Royal





# J A C K E T

A jacket is a garment for the upper body, usually extending below the hips. A jacket typically has sleeves, and fastens in the front or slightly on the side



Ref #5007JK

Composition  
74%PC 26%PL

Sizes  
S-M-L-XL

Colours  
02 BLACK

Made In Italy

#02

Black



# J A C K E T

A jacket is a garment for the upper body, usually extending below the hips. A jacket typically has sleeves, and fastens in the front or slightly on the side



Ref #7017JK

Composition  
50%PC 30%WO 20%VI

Sizes  
S-M-L-XL

Colours  
02 BLACK

Made In Italy

#02

Black





# J A C K E T

A jacket is a garment for the upper body, usually extending below the hips. A jacket typically has sleeves, and fastens in the front or slightly on the side



Ref #6004JK

Composition  
100% CO

Sizes  
S-M-L-XL

Colours  
23 CREAM

Made In Italy

#23

Cream



# J A C K E T

A jacket is a garment for the upper body, usually extending below the hips. A jacket typically has sleeves, and fastens in the front or slightly on the side



Ref #6006JK

Composition  
98%CO 2%EA

Sizes  
S-M-L-XL

Colours  
02 BLACK

Made In Portugal

#02

Black





# J A C K E T

A coat is a garment worn on the upper body by either gender for warmth or fashion.  
Coats typically have long sleeves and are open down the front.



Ref # 7003JK

Composition  
50%PC 30%WO 20%VI

Sizes  
S-M-L-XL

Colours  
05 BISCOTTO  
19 GERANIUM PINK

Made In Italy



#05

Biscotto



#19

Geranium Pink





# J A C K E T

A jacket is a garment for the upper body, usually extending below the hips. A jacket typically has sleeves, and fastens in the front or slightly on the side



Ref #7004JK

Composition  
50%PC 30%WO 20%VI

Sizes  
S-M-L-XL

Colours  
05 BISCOTTO  
19 GERANIUM PINK  
103 ZEBRA

Made In Italy



#05

Biscotto



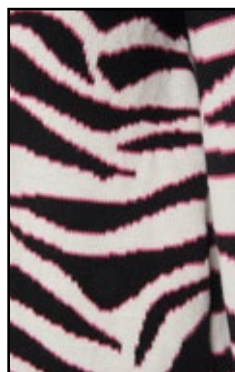
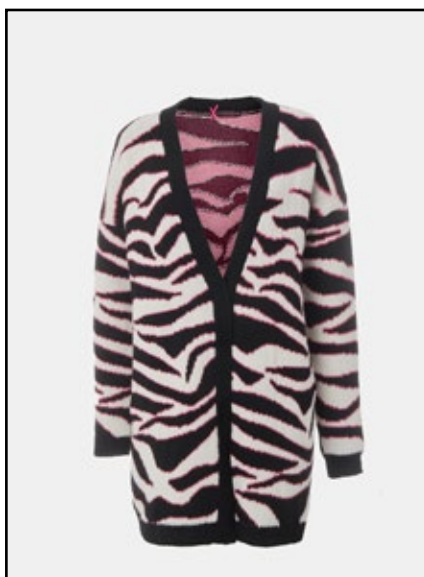
#19

Geranium Pink



#103

Zebra





# J A C K E T

A jacket is a garment for the upper body, usually extending below the hips. A jacket typically has sleeves, and fastens in the front or slightly on the side



Ref #7005JK

Composition  
50%PC 30%WO 20%VI

Sizes  
S-M-L-XL

Colours  
05 BISCOTTO  
19 GERANIUM PINK  
103 ZEBRA

Made In Italy



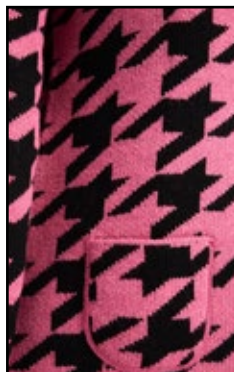
#05

Biscotto



#I9

Geranium Pink



#IO3

Zebra



# J A C K E T

A jacket is a garment for the upper body, usually extending below the hips. A jacket typically has sleeves, and fastens in the front or slightly on the side



Ref #7012JK

Composition  
50%PC 30%WO 20%VI

Sizes  
S-M-L-XL

Colours  
02 BLACK  
05 BISCOTTO  
19 GERANIUM PINK  
23 CREAM

Made In Italy





#02

Black



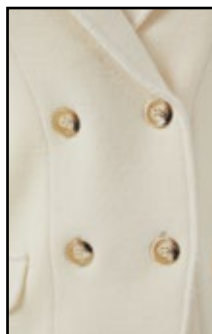
#05

Biscotto



#19

Geranium Pink



#23

Cream



# J A C K E T

A jacket is a garment for the upper body, usually extending below the hips. A jacket typically has sleeves, and fastens in the front or slightly on the side

Ref #9008JK



Composition  
100%PL

Sizes  
S-M-L-XL

Colours  
50 BLACK&WHITE

Made In China

#50

Black&White



# J A C K E T

A jacket is a garment for the upper body, usually extending below the hips. A jacket typically has sleeves, and fastens in the front or slightly on the side

Ref #2029JK



Composition  
90%CO 10%EA

Sizes  
S-M-L-XL-XXL

Colours  
02 BLACK

Made In Portugal

#02

Black





# P O N C H O

Poncho is an outer garment designed to keep the body warm.



Ref # 5003JK

Composition  
60%PC 20%WO 20%VI

Sizes  
M

Colours  
02 BLACK / REVERSIBLE  
32 CAPUCCINO / REVERSIBLE

Made In Italy



#02

Black



#32

Capuccino



# S K I R T

A skirt is the lower part of a dress/gown or a separate outer garment that covers a person from the waist downwards.



Ref #4005SK

Composition  
76%CO 24%PL

Sizes  
S-M-L-XL

Colours  
02 BLACK  
11 STONEWASH

Made In Italy



#O2

Black



#II

StoneWash





# S K I R T

A skirt is the lower part of a dress/gown or a separate outer garment that covers a person from the waist downwards.



Ref #2008SK

Composition  
100% PL

Sizes  
S-M-L-XL-XXL

Colours  
02 BLACK  
08 TERRA

Made In Portugal



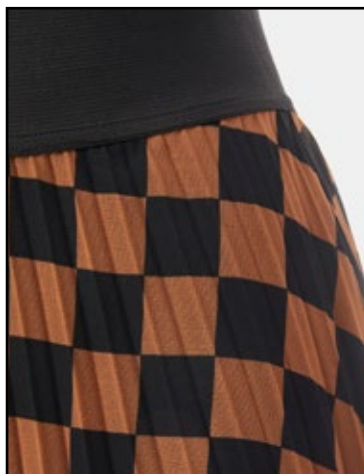
#02

Black



#08

Terra



# S K I R T

A skirt is the lower part of a dress/gown or a separate outer garment that covers a person from the waist downwards.



Ref #2005SK

Composition  
95%PL 5%EA

Sizes  
S-M-L-XL-XXL

Colours  
08 TERRA  
22 MULTICOLOR  
23 CREAM  
33 PETROL BLU

Made In Portugal





#08

Terra



#22

Multicolor



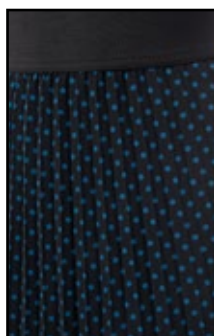
#23

Cream



#33

Petrol Blu





# S K I R T

A skirt is the lower part of a dress/gown or a separate outer garment that covers a person from the waist downwards.



Ref #2012SK

Composition  
95%PL 5%EA

Sizes  
S-M-L-XL-XXL

Colours  
06 SUN  
09 BLU ROYAL  
19 GERANIUM PINK

Made In Portugal



#06

Sun



#09

Blu Royal



#19

Geranium Pink



# S K I R T

A skirt is the lower part of a dress/gown or a separate outer garment that covers a person from the waist downwards.



Ref #3013SK

## Composition

50%PC 30%PL 10%WO 10%VI

## Sizes

S-M-L-XL

## Colours

02 BLACK

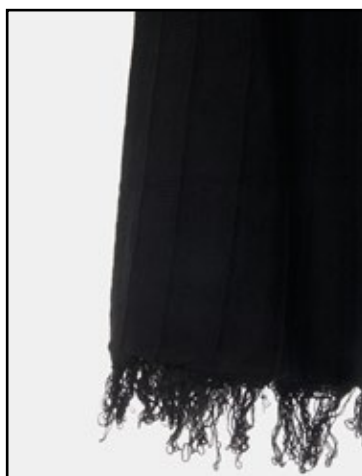
33 PETROL BLU

Made In Italy



#02

Black



#33

Petrol Blu





# S K I R T

A skirt is the lower part of a dress/gown or a separate outer garment that covers a person from the waist downwards.



Ref #6002SK

Composition  
98%CO 2%EA

Sizes  
S-M-L-XL-XXL

Colours  
12 AQUAMARINE

Made In Portugal

#I2

Aquamarine



# S K I R T

A skirt is the lower part of a dress/gown or a separate outer garment that covers a person from the waist downwards.



Ref #7009SK

Composition  
52%VI 28%PL 20%PA

Sizes  
S-M-L-XL

Colours  
23 CREAM

Made In Italy



#23

Cream





# S K I R T

A skirt is the lower part of a dress/gown or a separate outer garment that covers a person from the waist downwards.



Ref #2004SK

Composition  
60%PU 40%PL

Sizes  
S-M-L-XL-XXL

Colours  
02 BLACK

Made In Portugal

#02

Black



# S K I R T

A skirt is the lower part of a dress/gown or a separate outer garment that covers a person from the waist downwards.



Ref #2022SK

Composition  
95%PL 5%EA

Sizes  
S-M-L-XL-XXL

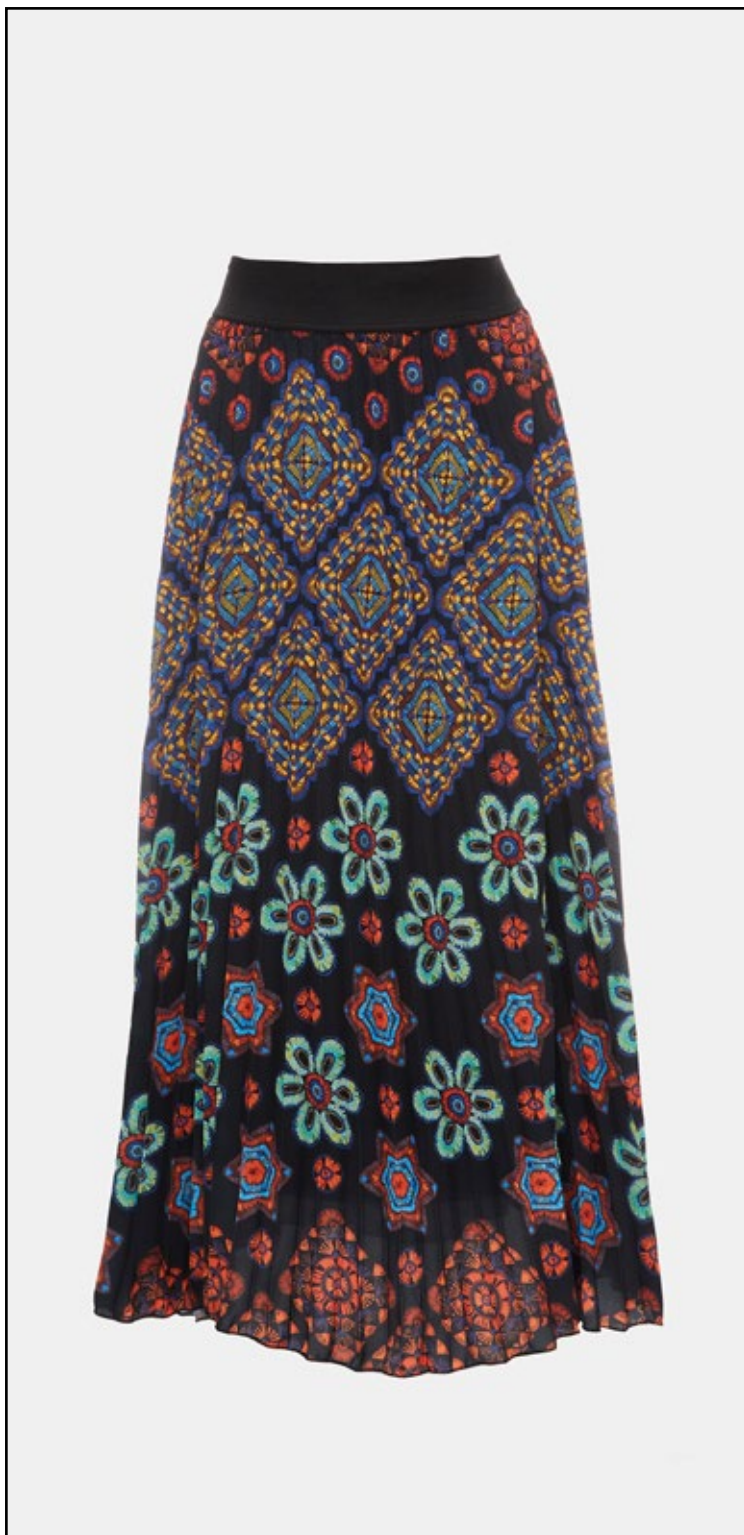
Colours  
101 CROCHET

Made In Portugal



#IOI

Crochet





# C H E M I S E

A skirt is the lower part of a dress/gown or a separate outer garment that covers a person from the waist downwards.



Ref #6007SH

Composition  
100% CO

Sizes  
S-M-L-XL-XXL

Colours  
12 AQUAMARINE

Made In Portugal

#I2

Aquamarine



# C H E M I S E

A skirt is the lower part of a dress/gown or a separate outer garment that covers a person from the waist downwards.



Ref #2043SH

Composition  
100%CO

Sizes  
S-M-L-XL-XXL

Colours  
02 BLACK  
11 STONEWASH

Made In Portugal



#O2

Black



#II

StoneWash





# C H E M I S E

A skirt is the lower part of a dress/gown or a separate outer garment that covers a person from the waist downwards.

Ref #4007SH



Composition  
76%CO 24%PL

Sizes  
S-M-L-XL

Colours  
02 BLACK  
11 STONEWASH

Made In Italy



#02

Black



#II

StoneWash



# S W E A T E R

A sweater, also called a jumper in British English,[1] is a piece of clothing, typically with long sleeves, made of knitted or crocheted material, that covers the upper part of the body.



Ref #3023SW

Composition  
50%VI 28%PA 22%PBT

Sizes  
S-M-L-XL

Colours  
22 MULTICOLOR

Made In Italy

#22

Multicolor





# S W E A T E R

A sweater, also called a jumper in British English,[1] is a piece of clothing, typically with long sleeves, made of knitted or crocheted material, that covers the upper part of the body.



Ref #2001SW

Composition  
50%CO 50%PL

Sizes  
S-M-L-XL-XXL

Colours  
04 MILK  
21 ANTRACITA

Made In Portugal



#04

Milk



#2I

Antracita



# S W E A T E R

A sweater, also called a jumper in British English,[1] is a piece of clothing, typically with long sleeves, made of knitted or crocheted material, that covers the upper part of the body.



Ref #2009SW

Composition  
50%CO 50%PL

Sizes  
S-M-L-XL-XXL

Colours  
02 BLACK  
23 CREAM

Made In Portugal



#02

Black



#23

Cream





# S W E A T E R

A sweater, also called a jumper in British English,[1] is a piece of clothing, typically with long sleeves, made of knitted or crocheted material, that covers the upper part of the body.



Ref #2018SW

Composition  
50%CO 50%PL

Sizes  
S-M-L-XL-XXL

Colours  
08 TERRA  
33 PETROL BLU

Made In Portugal

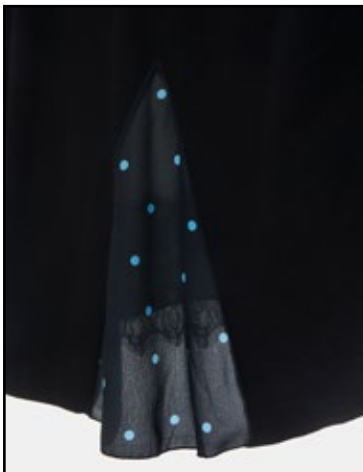
#08

Terra



#33

Petrol Blu



# S W E A T E R

A sweater, also called a jumper in British English,[1] is a piece of clothing, typically with long sleeves, made of knitted or crocheted material, that covers the upper part of the body.



Ref #2027SW

Composition  
50%CO 50%PL

Sizes  
S-M-L-XL-XXL

Colours  
02 BLACK  
05 BISCOTTO  
21 ANTRACITA  
50 BLACK&WHITE  
Made In Portugal



#02

Black



#05

Bicotto



#2I

Antracita



#50

Black&White





# SWEATER

A sweater, also called a jumper in British English,[1] is a piece of clothing, typically with long sleeves, made of knitted or crocheted material, that covers the upper part of the body.



Ref #204ISW

Composition  
50%CO 50%PL

Sizes  
S-M-L-XL-XXL

Colours  
02 BLACK  
23 CREAM

Made In Portugal



#02

Black



#23

Cream



# S W E A T E R

A sweater, also called a jumper in British English,[1] is a piece of clothing, typically with long sleeves, made of knitted or crocheted material, that covers the upper part of the body.



Ref #2047SW

Composition  
92%PL 8%EL

Sizes  
S-M-L-XL-XXL

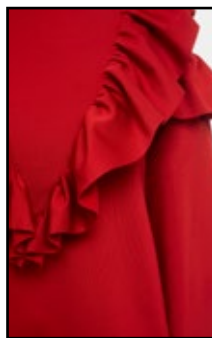
Colours  
02 BLACK  
03 RED  
06 SUN  
09 BLU ROYAL

Made In Portugal



#02

Black



#03

Red



#06

Sun



#09

Blu Royal



# S W E A T E R

A sweater, also called a jumper in British English,[1] is a piece of clothing, typically with long sleeves, made of knitted or crocheted material, that covers the upper part of the body.



Ref #3008SW

## Composition

50%PC 30%PL 10%WO 10%VI

## Sizes

S-M-L-XL

## Colours

05 BISCOTTO

20 GREY

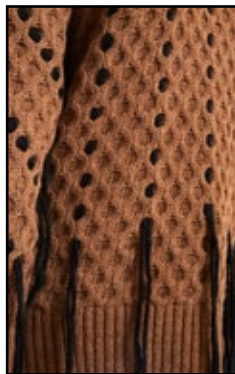
23 CREAM

Made In Italy



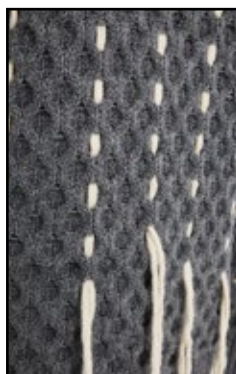
#05

Biscotto



#20

Grey



#23

Cream



# SWEATER

A sweater, also called a jumper in British English,[1] is a piece of clothing, typically with long sleeves, made of knitted or crocheted material, that covers the upper part of the body.



Ref #3014SW

## Composition

50%PC 30%PL 10%WO 10%VI

## Sizes

S-M-L-XL

## Colours

08 TERRA

20 GREY

23 CREAM

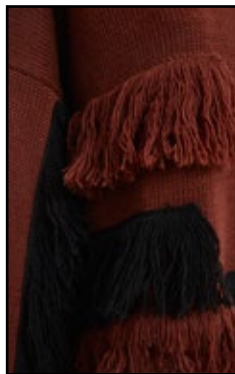
Made In Italy





#08

Terra



#20

Grey



#23

Cream





# S W E A T E R

A sweater, also called a jumper in British English,[1] is a piece of clothing, typically with long sleeves, made of knitted or crocheted material, that covers the upper part of the body.



Ref #5001SW

Composition  
74%PC 26%PL

Sizes  
S-M-L-XL

Colours  
03 RED

Made In Italy

#03

Red





# S W E A T E R

A sweater, also called a jumper in British English,[1] is a piece of clothing, typically with long sleeves, made of knitted or crocheted material, that covers the upper part of the body.



Ref #5006SW

Composition  
60%PC 20%WO 20%VI

Sizes  
S-M-L-XL

Colours  
10 BLU  
32 CAPUCCINO

Made In Italy

#10

Blu



#32

Capuccino





# SWEATER

A sweater, also called a jumper in British English,[1] is a piece of clothing, typically with long sleeves, made of knitted or crocheted material, that covers the upper part of the body.



Ref # 7010SW

Composition  
52%VI 28%PL 20%PA

Sizes  
S-M-L-XL

Colours  
23 CREAM

Made In Italy

#23

Cream



# SWEATER

A sweater, also called a jumper in British English,[1] is a piece of clothing, typically with long sleeves, made of knitted or crocheted material, that covers the upper part of the body.



Ref #2006SW

Composition  
50%CO 50%PL

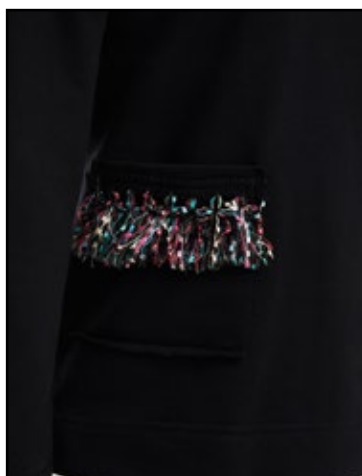
Sizes  
S-M-L-XL-XXL

Colours  
02 BLACK  
23 CREAM

Made In Portugal

#02

Black



#23

Cream





# S W E A T E R

A sweater, also called a jumper in British English,[1] is a piece of clothing, typically with long sleeves, made of knitted or crocheted material, that covers the upper part of the body.



Ref #2013SW

Composition  
92%PL 8%EL

Sizes  
S-M-L-XL-XXL

Colours  
33 PETROL BLU  
102 LOGO

Made In Portugal



#33

Petrol Blu



#IO2

Logo



# S W E A T E R

A sweater, also called a jumper in British English,[1] is a piece of clothing, typically with long sleeves, made of knitted or crocheted material, that covers the upper part of the body.



Ref #2017SW

Composition  
50%CO 50%PL

Sizes  
S-M-L-XL-XXL

Colours  
50 BLACK&WHITE

Made In Portugal

#50

Black&White





# SWEATER

A sweater, also called a jumper in British English,[1] is a piece of clothing, typically with long sleeves, made of knitted or crocheted material, that covers the upper part of the body.



Ref #2021SW

Composition  
50%CO 50%PL

Sizes  
S-M-L-XL-XXL

Colours  
02 BLACK  
05 BISCOTTO  
21 ANTRACITA  
50 BLACK&WHITE

Made In Portugal



#02

Black



#05

Biscotto



#21

Antracita



#50

Black&White

# S W E A T E R

A sweater, also called a jumper in British English,[1] is a piece of clothing, typically with long sleeves, made of knitted or crocheted material, that covers the upper part of the body.



Ref #2024SW

Composition  
67%PL 30%CO 3%EA

Sizes  
S-M-L-XL-XXL

Colours  
21 ANTRACITA

Made In Portugal

#2I

Antracita





# S W E A T E R

A sweater, also called a jumper in British English,[1] is a piece of clothing, typically with long sleeves, made of knitted or crocheted material, that covers the upper part of the body.



Ref #2026SW

Composition  
50%CO 50%PL

Sizes  
S-M-L-XL-XXL

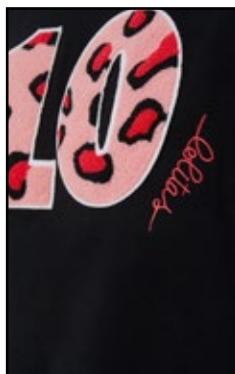
Colours  
02 BLACK  
04 MILK  
05 BISCOTTO

Made In Portugal



#02

Black



#04

Milk



#05

Biscotto



# S W E A T E R

A sweater, also called a jumper in British English,[1] is a piece of clothing, typically with long sleeves, made of knitted or crocheted material, that covers the upper part of the body.



Ref #2028SW

Composition  
50%CO 50%PL

Sizes  
S-M-L-XL-XXL

Colours  
02 BLACK  
05 BISCOTTO  
21 ANTRACITA

Made In Portugal



#02

Black



#05

Biscotto



#2I

Antracita





# S W E A T E R

A sweater, also called a jumper in British English,[1] is a piece of clothing, typically with long sleeves, made of knitted or crocheted material, that covers the upper part of the body.



Ref #2033SW

Composition  
90%CO 10%EA

Sizes  
S-M-L-XL-XXL

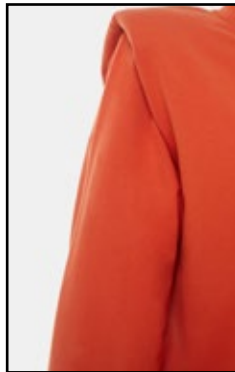
Colours  
08 TERRA  
23 CREAM  
33 PETROL BLU

Made In Portugal



#08

Terra



#23

Cream



#33

Petrol Blu



# S W E A T E R

A sweater, also called a jumper in British English,[1] is a piece of clothing, typically with long sleeves, made of knitted or crocheted material, that covers the upper part of the body.



Ref #2036SW

Composition  
50%CO 50%PL

Sizes  
S-M-L-XL-XXL

Colours  
02 BLACK

Made In Portugal

#02

Black





# S W E A T E R

A sweater, also called a jumper in British English,[1] is a piece of clothing, typically with long sleeves, made of knitted or crocheted material, that covers the upper part of the body.



Ref #2037SW

Composition  
50%CO 50%PL

Sizes  
S-M-L-XL-XXL

Colours  
05 BISCOTTO  
23 CREAM

Made In Portugal



#05

Biscotto



#23

Cream



# S W E A T E R

A sweater, also called a jumper in British English,[1] is a piece of clothing, typically with long sleeves, made of knitted or crocheted material, that covers the upper part of the body.



Ref #2044SW

Composition  
50%CO 50%PL

Sizes  
S-M-L-XL-XXL

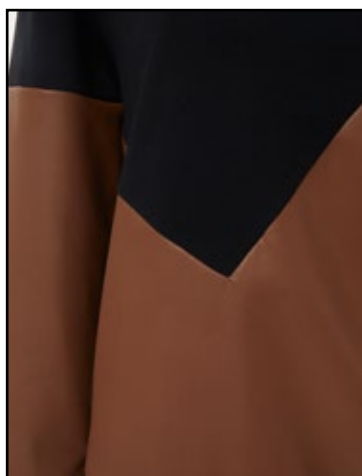
Colours  
02 BLACK  
32 CAPUCCINO

Made In Portugal



#02

Black



#32

Capuccino





# SWEATER

A sweater, also called a jumper in British English,[1] is a piece of clothing, typically with long sleeves, made of knitted or crocheted material, that covers the upper part of the body.



Ref #3001SW

## Composition

50%PC 30%PL 10%WO 10%V

## Sizes

S-M-L-XL

## Colours

02 BLACK

05 BISCOTTO

21 ANTRACITA

Made In Italy



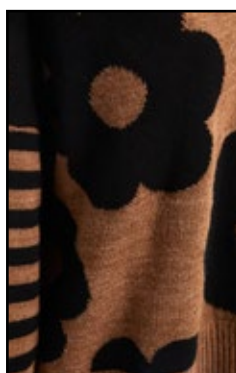
#02

Black



#05

Biscotto



#2I

Antracita



# S W E A T E R

A sweater, also called a jumper in British English,[1] is a piece of clothing, typically with long sleeves, made of knitted or crocheted material, that covers the upper part of the body.



Ref #3002SW

## Composition

50%PC 30%PL 10%WO 10%V

## Sizes

S-M-L-XL

## Colours

02 BLACK

05 BISCOTTO

33 PETROL BLU

Made In Italy



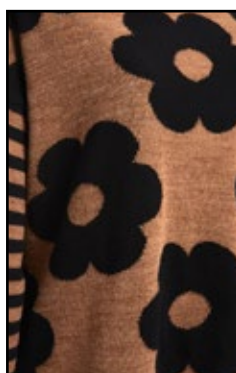
#02

Black



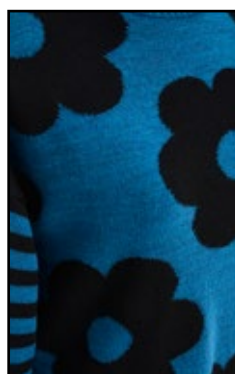
#05

Biscotto



#33

Petrol Blu





# S W E A T E R

A sweater, also called a jumper in British English,[1] is a piece of clothing, typically with long sleeves, made of knitted or crocheted material, that covers the upper part of the body.



Ref #3003SW

## Composition

50%PC 30%PL 10%WO 10%V

## Sizes

M

## Colours

20 GREY

23 CREAM

32 CAPUCCINO

Made In Italy



#20

Grey



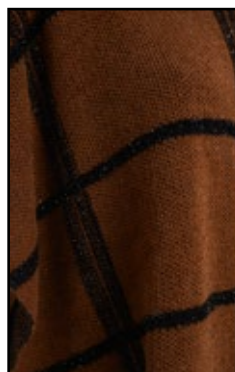
#23

Cream



#32

Capuccino



# S W E A T E R

A sweater, also called a jumper in British English,[1] is a piece of clothing, typically with long sleeves, made of knitted or crocheted material, that covers the upper part of the body.



Ref #3004SW

## Composition

50%PC 30%PL 10%WO 10%V

## Sizes

S-M- L- XL

## Colours

20 GREY

23 CREAM

32 CAPUCCINO

Made In Italy





#20

Grey



#23

Cream



#32

Capuccino





# S W E A T E R

A sweater, also called a jumper in British English,[1] is a piece of clothing, typically with long sleeves, made of knitted or crocheted material, that covers the upper part of the body.



Ref #3005SW

## Composition

50%PC 30%PL 10%WO 10%VI

## Sizes

S-M- L- XL

## Colours

05 BISCOTTO

20 GREY

23 CREAM

Made In Italy



#05

Biscotto



#20

Grey



#23

Cream



# S W E A T E R

A sweater, also called a jumper in British English,[1] is a piece of clothing, typically with long sleeves, made of knitted or crocheted material, that covers the upper part of the body.



Ref #3006SW

## Composition

50%PC 30%PL 10%WO 10%VI

## Sizes

S-M- L- XL

## Colours

08 TERRA

23 CREAM

33 PETROL BLU

Made In Italy





#08

Terra



#23

Cream



#33

Petrol Blu





# S W E A T E R

A sweater, also called a jumper in British English,[1] is a piece of clothing, typically with long sleeves, made of knitted or crocheted material, that covers the upper part of the body.



Ref #3007SW

## Composition

50%PC 30%PL 10%WO 10%VI

## Sizes

S-M- L- XL

## Colours

05 BISCOTTO

20 GREY

23 CREAM

Made In Italy



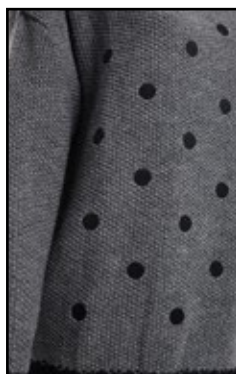
#05

Biscotto



#20

Grey



#23

Cream



# S W E A T E R

A sweater, also called a jumper in British English,[1] is a piece of clothing, typically with long sleeves, made of knitted or crocheted material, that covers the upper part of the body.



Ref #3016SW

## Composition

50%PC 30%PL 10%WO 10%VI

## Sizes

S-M- L- XL

## Colours

23 CREAM

32 CAPUCCINO

33 PETROL BLU

Made In Italy





#23

Cream



#32

Capuccino



#33

Petrol Blu





# S W E A T E R

A sweater, also called a jumper in British English,[1] is a piece of clothing, typically with long sleeves, made of knitted or crocheted material, that covers the upper part of the body.



Ref #3017SW

## Composition

50%PC 30%PL 10%WO 10%VI

## Sizes

S-M- L- XL

## Colours

05 BISCOTTO

20 GREY

23 CREAM

Made In Italy



#05

Biscotto



#20

Grey



#23

Cream



# SWEATER

A sweater, also called a jumper in British English,[1] is a piece of clothing, typically with long sleeves, made of knitted or crocheted material, that covers the upper part of the body.



Ref #3018SW

## Composition

50%PC 30%PL 10%WO 10%VI

## Sizes

S-M- L- XL

## Colours

02 BLACK

23 CREAM

Made In Italy



#02

Black



#23

Cream





# S W E A T E R

A sweater, also called a jumper in British English,[1] is a piece of clothing, typically with long sleeves, made of knitted or crocheted material, that covers the upper part of the body.



Ref #3019SW

Composition  
100%PA

Sizes  
S-M- L- XL

Colours  
02 BLACK  
06 SUN  
09 BLU ROYAL  
18 LITTLE ROSE  
19 GERANIUM PINK  
23 CREAM

Made In Italy



#02

Black



#09

Blu Royal



#06

Sun



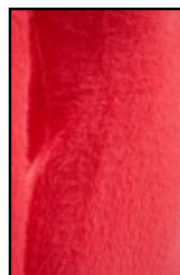
#18

Little Rose



#19

Geranium Pink



#23

Cream



# S W E A T E R

A sweater, also called a jumper in British English,[1] is a piece of clothing, typically with long sleeves, made of knitted or crocheted material, that covers the upper part of the body.



Ref #3020SW

Composition  
100%PA

Sizes  
S-M- L- XL

Colours  
02 BLACK  
06 SUN  
09 BLU ROYAL  
18 LITTLE ROSE  
19 GERANIUM PINK  
23 CREAM

Made In Italy



#02

Black



#09

Blu Royal



#06

Sun



#18

Little Rose



#19

Geranium Pink



#23

Cream





# S W E A T E R

A sweater, also called a jumper in British English,[1] is a piece of clothing, typically with long sleeves, made of knitted or crocheted material, that covers the upper part of the body.



Ref #3025SW

Composition  
67%VI 28%WO 5%EA

Sizes  
M

Colours  
02 BLACK  
08 TERRA  
33 PETROL BLU

Made In Italy



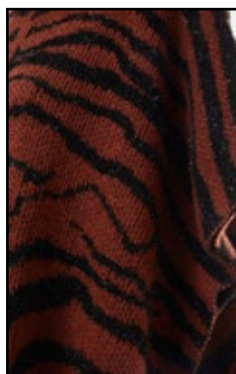
#02

Black



#08

Terra



#33

Petrol Blu



# SWEATER

A sweater, also called a jumper in British English,[1] is a piece of clothing, typically with long sleeves, made of knitted or crocheted material, that covers the upper part of the body.



Ref #5008SW

Composition  
74%PC 26%PL

Sizes  
S-M-L-XL

Colours  
02 BLACK

Made In Italy



#02

Black





# SWEATER

A sweater, also called a jumper in British English,[1] is a piece of clothing, typically with long sleeves, made of knitted or crocheted material, that covers the upper part of the body.



Ref #7002SW

Composition  
50%PC 30%WO 20%VI

Sizes  
S-M- L- XL

Colours  
02 BLACK  
05 BISCOTTO

Made In Italy



#02

Black



#05

Biscotto



# S W E A T E R

A sweater, also called a jumper in British English,[1] is a piece of clothing, typically with long sleeves, made of knitted or crocheted material, that covers the upper part of the body.



Ref #7006SW

Composition  
50%PC 30%WO 20%VI

Sizes  
S-M- L- XL

Colours  
05 BISCOTTO  
19 GERANIUM PINK  
103 ZEBRA

Made In Italy





#05

Biscotto



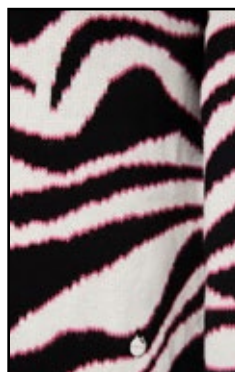
#19

Geranium Pink



#103

Zebra





# S W E A T E R

A sweater, also called a jumper in British English,[1] is a piece of clothing, typically with long sleeves, made of knitted or crocheted material, that covers the upper part of the body.



Ref #7008SW

Composition  
50%CO 50%PL

Sizes  
M

Colours  
02 BLACK  
06 SUN  
09 BLU ROYAL  
19 GERANIUM PINK

Made In Italy



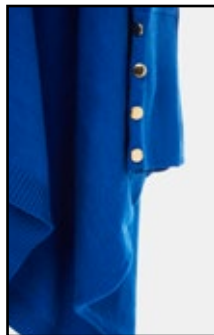
#02

Black



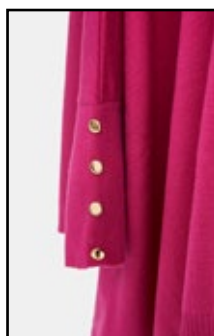
#06

Sun



#09

Blu Royal



#19

Geranium Pink

# S W E A T E R

A sweater, also called a jumper in British English,[1] is a piece of clothing, typically with long sleeves, made of knitted or crocheted material, that covers the upper part of the body.



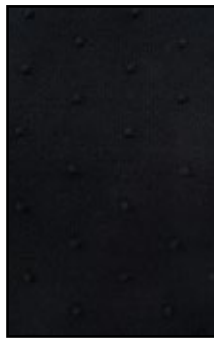
Ref #7013SW

Composition  
52%VI 28%PL 20%PA

Sizes  
S-M- L- XL

Colours  
02 BLACK  
05 BISCOTTO  
09 BLU ROYAL  
19 GERANIUM PINK  
23 CREAM

Made In Italy



#02

Black



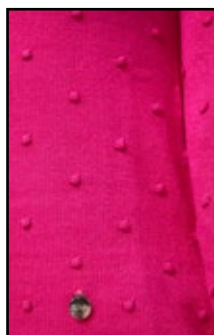
#05

Biscotto



#09

Blu Royal



#19

Geranium Pink



#23

Cream



# S W E A T E R

A sweater, also called a jumper in British English,[1] is a piece of clothing, typically with long sleeves, made of knitted or crocheted material, that covers the upper part of the body.



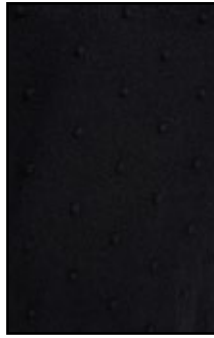
Ref #7014SW

Composition  
52%VI 28%PL 20%PA

Sizes  
S-M- L- XL

Colours  
02 BLACK  
05 BISCOTTO  
09 BLU ROYAL  
19 GERANIUM PINK  
23 CREAM

Made In Italy



#02

Black



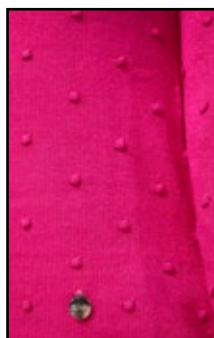
#05

Biscotto



#09

Blu Royal



#19

Geranium Pink



#23

Cream

# S W E A T E R

A sweater, also called a jumper in British English,[1] is a piece of clothing, typically with long sleeves, made of knitted or crocheted material, that covers the upper part of the body.



Ref #2010SW

Composition  
50% CO 50% PL

Sizes  
S-M- L- XL-XXL

Colours  
04 MILK  
21 ANTRACITA

Made In Portugal

#04

Milk



#2I

Antracita





# S W E A T E R

A sweater, also called a jumper in British English,[1] is a piece of clothing, typically with long sleeves, made of knitted or crocheted material, that covers the upper part of the body.

Ref #2025SW



Composition  
50% CO 50% PL

Sizes  
S-M- L- XL-XXL

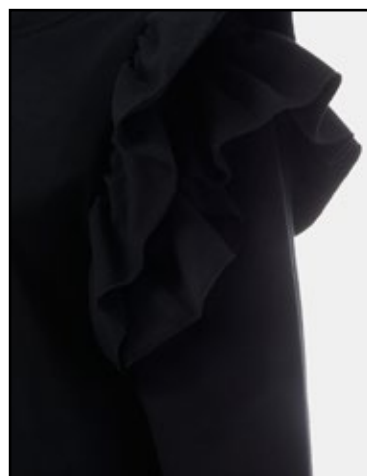
Colours  
02 BLACK  
04 MILK

Made In Portugal



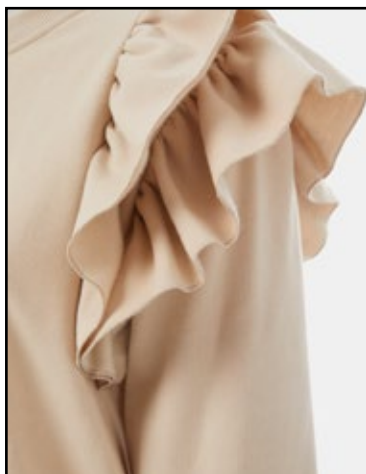
#02

Black



#04

Milk



# S W E A T E R

A sweater, also called a jumper in British English,[1] is a piece of clothing, typically with long sleeves, made of knitted or crocheted material, that covers the upper part of the body.



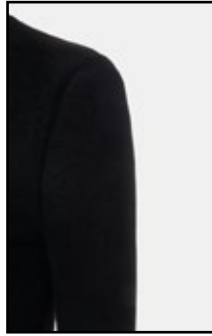
Ref #4001SH

Composition  
67%VI 28%WO 5%EA

Sizes  
S-M-L-XL

Colours  
02 BLACK  
05 BISCOTTO  
08 TERRA  
33 PETROL BLU

Made In Italy



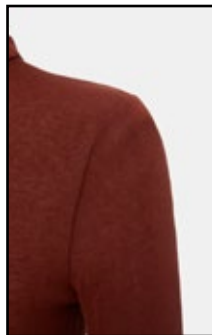
#02

Black



#05

Biscotto



#08

Terra



#33

Petrol Blu



# SWEATER

A sweater, also called a jumper in British English,[1] is a piece of clothing, typically with long sleeves, made of knitted or crocheted material, that covers the upper part of the body.

Ref #4002SH



Composition  
81%VI 14%WO 5%EA

Sizes  
S-M-L-XL

Colours  
05 BISCOTTO  
08 TERRA  
23 CREAM  
33 PETROL BLU

Made In Italy



#05

Biscotto



#08

Terra



#23

Cream



#33

Petrol Blu

# S W E A T E R

A sweater, also called a jumper in British English,[1] is a piece of clothing, typically with long sleeves, made of knitted or crocheted material, that covers the upper part of the body.

Ref #4003SH

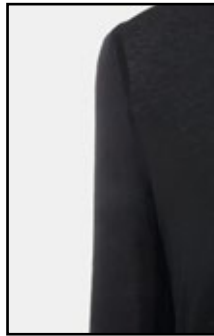


Composition  
67%VI 28%WO 5%EA

Sizes  
S-M-L-XL

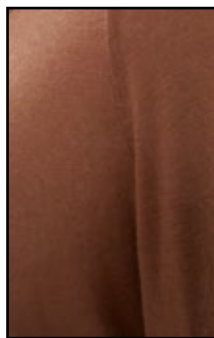
Colours  
02 BLACK  
05 BISCOTTO  
08 TERRA  
33 PETROL BLU

Made In Italy



#02

Black



#05

Biscotto



#08

Terra



#33

Petrol Blu



# S W E A T E R

A sweater, also called a jumper in British English,[1] is a piece of clothing, typically with long sleeves, made of knitted or crocheted material, that covers the upper part of the body.



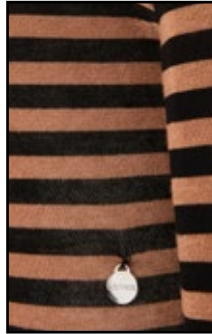
Ref #4004SH

Composition  
81%VI 14%WO 5%EA

Sizes  
S-M-L-XL

Colours  
05 BISCOTTO  
08 TERRA  
23 CREAM  
33 PETROL BLU

Made In Italy



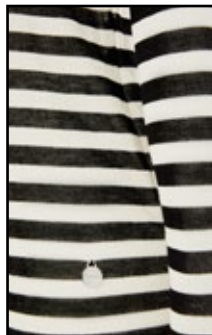
#05

Biscotto



#08

Terra



#23

Cream



#33

Petrol Blu

# S W E A T E R

A sweater, also called a jumper in British English,[1] is a piece of clothing, typically with long sleeves, made of knitted or crocheted material, that covers the upper part of the body.



Ref #3026SW

Composition  
67%VI 28%WO 5%EA

Sizes  
S-M- L- XL

Colours  
02 BLACK  
08 TERRA  
33 PETROL BLU

Made In Italy





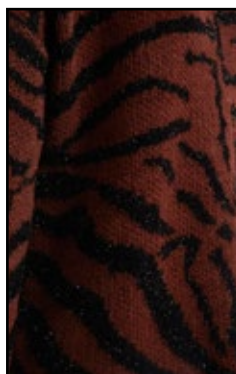
#02

Black



#08

Terra



#33

Petrol Blu





# T - S H I R T

A T-shirt, or tee shirt, is a style of fabric shirt named after the T shape of its body and sleeves. Traditionally, it has short sleeves and a round neckline, known as a crew neck, which lacks a collar.

Ref #2032SH



Composition  
90%CO 10%EA

Sizes  
S-M-L-XL-XXL

Colours  
01 WHITE

Made In Portugal

#OI

White



# T - S H I R T

A T-shirt, or tee shirt, is a style of fabric shirt named after the T shape of its body and sleeves. Traditionally, it has short sleeves and a round neckline, known as a crew neck, which lacks a collar.

Ref #2011SH



Composition  
50%CO 50%EA

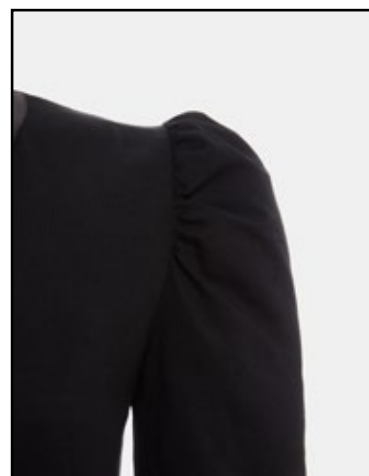
Sizes  
S-M-L-XL-XXL

Colours  
02 BLACK  
23 CREAM

Made In Portugal

#02

Black



#23

Cream





# T - S H I R T

A T-shirt, or tee shirt, is a style of fabric shirt named after the T shape of its body and sleeves. Traditionally, it has short sleeves and a round neckline, known as a crew neck, which lacks a collar.

Ref #2039SH



Composition  
90%CO 10%EA

Sizes  
S-M-L-XL-XXL

Colours  
01 WHITE  
02 BLACK

Made In Portugal



#OI

White



#O2

Black



# T - S H I R T

A T-shirt, or tee shirt, is a style of fabric shirt named after the T shape of its body and sleeves. Traditionally, it has short sleeves and a round neckline, known as a crew neck, which lacks a collar.



Ref #2040SH

Composition  
50%CO 50%PL

Sizes  
S-M-L-XL-XXL

Colours  
02 BLACK

Made In Portugal

#02

Black





# T - S H I R T

A T-shirt, or tee shirt, is a style of fabric shirt named after the T shape of its body and sleeves. Traditionally, it has short sleeves and a round neckline, known as a crew neck, which lacks a collar.



Ref #2015SW

Composition  
50%CO 50%PL

Sizes  
S-M-L-XL-XXL

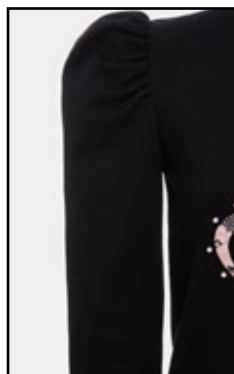
Colours  
02 BLACK  
21 ANTRACITA  
50 BLACK&WHITE

Made In Portugal



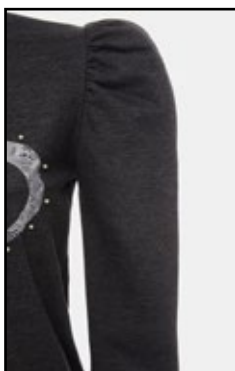
#02

Black



#2I

Antracita



#50

Black&White



# T - S H I R T

A T-shirt, or tee shirt, is a style of fabric shirt named after the T shape of its body and sleeves. Traditionally, it has short sleeves and a round neckline, known as a crew neck, which lacks a collar.



Ref #2023SH

Composition  
95%PL 5%EA

Sizes  
S-M-L-XL-XXL

Colours  
101 CROCHET

Made In Portugal

#IOI

Crochet





# TROUSERS

Trousers are an item of clothing that might have originated in Central Asia, worn from the waist to the ankles, covering both legs separately.

Ref #4008PA



Composition  
99%CO 1%EA

Sizes  
S-M-L-XL

Colours  
02 BLACK  
11 STONEWASH

Made In Italy



#O2

Black



#II

StoneWash



# TROUSERS

Trousers are an item of clothing that might have originated in Central Asia, worn from the waist to the ankles, covering both legs separately.



Ref #4009PA

Composition  
99%CO 1%EA

Sizes  
S-M-L-XL

Colours  
02 BLACK

Made In Italy

#02

Black





# TROUSERS

Trousers are an item of clothing that might have originated in Central Asia, worn from the waist to the ankles, covering both legs separately.

Ref #9011PA



Composition  
100% PU

Sizes  
S-M-L-XL

Colours  
02 BLACK  
32 CAPUCCINO

Made In Italy



#02

Black



#32

Capuccino



# T R O U S E R S

Trousers are an item of clothing that might have originated in Central Asia, worn from the waist to the ankles, covering both legs separately.

Ref #2BSOI6



Composition  
70%VI 25%PL 5%EA

Sizes  
S-M-L-XL-XXL

Colours  
02 BLACK  
05 BISCOTTO

Made In Portugal



#02

Black



#05

Biscotto





# TROUSERS

Trousers are an item of clothing that might have originated in Central Asia, worn from the waist to the ankles, covering both legs separately.

Ref #2038PA



Composition  
72%PL 25%PU 3%EA

Sizes  
S-M-L-XL-XXL

Colours  
02 BLACK  
05 BISCOTTO

Made In Portugal



#02

Black



#05

Biscotto



# TROUSERS

Trousers are an item of clothing that might have originated in Central Asia, worn from the waist to the ankles, covering both legs separately.

Ref #2002PA



Composition  
50%CO 50%PL

Sizes  
S-M-L-XL-XXL

Colours  
02 BLACK,  
04 MILK,  
05 BISCOTTO,  
21 ANTRACITA

Made In Portugal



#02

Black



#04

Milk



#05

Biscotto



#2I

Antracita



# TROUSERS

Trousers are an item of clothing that might have originated in Central Asia, worn from the waist to the ankles, covering both legs separately.

Ref #2030PA



Composition  
100%CO

Sizes  
S-M-L-XL-XXL

Colours  
11 STONEWASH

Made In Portugal

#II

StoneWash



# TROUSERS

Trousers are an item of clothing that might have originated in Central Asia, worn from the waist to the ankles, covering both legs separately.

Ref #2019PA



Composition  
72%PL 25%PU 3%EA

Sizes  
S-M-L-XL-XXL

Colours  
02 BLACK  
32 CAPUCCINO

Made In Portugal



#02

Black



#32  
Capuccino





# T R O U S E R S

Trousers are an item of clothing that might have originated in Central Asia, worn from the waist to the ankles, covering both legs separately.

Ref #2007PA



Composition  
50%CO 50%PL

Sizes  
S-M-L-XL-XXL

Colours  
02 BLACK,  
04 MILK,  
05 BISCOTTO,  
21 ANTRACITA  
Made In Portugal



#02

Black



#04

Milk



#05

Biscotto



#2I

Antracita

# TROUSERS

Trousers are an item of clothing that might have originated in Central Asia, worn from the waist to the ankles, covering both legs separately.

Ref #2035PA



Composition  
100%CO

Sizes  
S-M-L-XL-XXL

Colours  
50 BLACK&WHITE

Made In Portugal

#50

Black&White





# T R O U S E R S

Trousers are an item of clothing that might have originated in Central Asia, worn from the waist to the ankles, covering both legs separately.



Ref #2BS058

Composition  
70%VI 25%PL 5%EA

Sizes  
S-M-L-XL-XXL

Colours  
02 BLACK

Made In Portugal

#02

Black



# TROUSERS

Trousers are an item of clothing that might have originated in Central Asia, worn from the waist to the ankles, covering both legs separately.

Ref #3011PA



## Composition

50%PC 30%PL 10%WO 10%VI

## Sizes

S-M-L

## Colours

02 BLACK

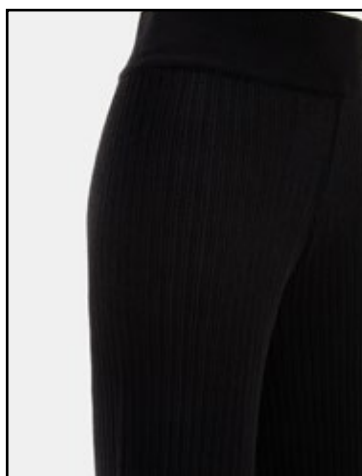
08 TERRA

Made In Italy



#02

Black



#08

Terra





# TROUSERS

Trousers are an item of clothing that might have originated in Central Asia, worn from the waist to the ankles, covering both legs separately.



Ref #6001PA

Composition  
100%CO

Sizes  
S-M-L-XL-XXL

Colours  
23 CREAM

Made In Portugal

#23

Cream



# T R O U S E R S

Trousers are an item of clothing that might have originated in Central Asia, worn from the waist to the ankles, covering both legs separately.

Ref #6003PA



Composition  
100%CO

Sizes  
S-M-L-XL-XXL

Colours  
11 STONEWASH

Made In Portugal

#II

StoneWash





# TROUSERS

Trousers are an item of clothing that might have originated in Central Asia, worn from the waist to the ankles, covering both legs separately.



Ref #7016PA

## Composition

50%PC 30%PL 10%WO 10%VI

## Sizes

S-M-L-XL

## Colours

02 BLACK

23 CREAM

Made In Italy



#02

Black



#23

Cream



# T R O U S E R S

Trousers are an item of clothing that might have originated in Central Asia, worn from the waist to the ankles, covering both legs separately.

Ref #2BS015



Composition  
70%VI 25%PL 5%EA

Sizes  
S-M-L-XL-XXL

Colours  
02 BLACK  
05 BISCOTTO  
09 BLU ROYAL

Made In Portugal



#02

Black



#05

Biscotto



#09

Blu Royal





# TROUSERS

Trousers are an item of clothing that might have originated in Central Asia, worn from the waist to the ankles, covering both legs separately.

Ref #7015PA



## Composition

50%PC 30%PL 10%WO 10%VI

## Sizes

S-M-L-XL

## Colours

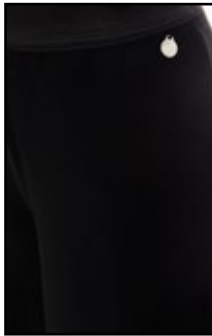
02 BLACK

05 BISCOTTO

09 BLU ROYAL

23 CREAM

Made In Italy



#02

Black



#05

Biscotto



#09

Blu Royal



#23

Cream

# TROUSERS

Trousers are an item of clothing that might have originated in Central Asia, worn from the waist to the ankles, covering both legs separately.

Ref #6005PA



Composition  
98%CO 2%EA

Sizes  
S-M-L-XL-XXL

Colours  
02 BLACK

Made In Portugal

#02

Black





# B E L T

Belt is, a leather or fabric band worn around the waist.

Ref #CINooo2



Composition  
100%PL

Sizes  
One Size

Colours  
02 BLACK  
05 BISCOTTO  
23 CREAM



#02

Black



#05

Biscotto



#23

Cream



# INSPIRATION

is an unconscious burst of creativity in a literary, musical, or other artistic endeavour.

## WILD Jeans Look



Jacket  
7001CO

Denim Chemise  
6007\_SH

Denim Skirt  
6002SK

# ANIMAL Inspiration Look



Sweater  
7002SWS

Trousers  
2038PA



Coat  
9006JK

Skirt  
2004SK



# INSPIRATION

is an unconscious burst of creativity in a literary, musical, or other artistic endeavour.

## ZEBRA Print Look



Dress  
9013DSR

Sweater  
3026SWS

Trousers  
2019PA

## SMART & Chic Look



Dress  
3024DR

Belt



Coat  
9002CO

# INSPIRATION

is an unconscious burst of creativity in a literary, musical, or other artistic endeavour.

BROWN is the  
New Black



Sweater  
2028SWT

Trousers  
9011PA

Dress  
9012DR

# FOLKY Denim Look



Sweater  
5001SW

Trousers  
4008PA



Sweater  
3023SW

Trousers  
6003PA



# INSPIRATION

is an unconscious burst of creativity in a literary, musical, or other artistic endeavour.

## COMFY & Chic Look



Sweater  
2044SWT

Trousers  
2002PA

Sweater  
2027SWT

Trousers  
2BS016

# BRIGHT Colours Look



Sweater  
2033SWT

Trousers  
4009PA



Sweater  
2047SWT

Trousers  
6001PA



# I N D E X

#Coat - 2

#Dress - 26

#Jacket - 68

#Poncho - 102

#Skirt - 104

#Chemise - 122

#Sweater - 128

#T-Shirt - 226

#Trousers - 238

#Belt - 274

#Inspiration - 276



# R E F E R E N C E

#Ref	#Pages	#Ref	#Pages
2001SW	130	2039SH	230
2002PA	248	2040SH	232
2003DR	32	2041SW	138
2004SK	118	2042DR	40
2005SK	108	2043SK	124
2006SW	152	2044SW	172
2007PA	254	2045DR	66
2008SK	106	2046DR	42
2009SW	132	2047SW	140
2010SW	212	2048DR	44
2011SH	228		
2012SK	110	2BS015	268
2013SW	154	2BS016	244
2014DR	34	2BS058	258
2015SW	234		
2016DR	30	3001SW	174
2017SW	156	3002SW	176
2018SW	132	3003SW	178
2019PA	250	3004SW	180
2020DR	26	3005SW	182
2021SW	156	3006SW	184
2022SK	120	3007SW	186
2023SH	236	3008SW	142
2024SW	160	3009CA	72
2025SW	214	3010DR	28
2026SW	162	3011PA	260
2027SW	136	3012JK	74
2028SW	164	3013SK	112
2029JK	100	3014SW	144
2030PA	250	3015CA	68
2031DR	36	3016SW	188
2032SH	226	3017SW	190
2033SW	166	3018SW	192
2034DR	38	3019SW	194
2035PA	256	3020SW	196
2036SW	168	3021DR	46
2037SW	170	3022JK	76
2038PA	246		

# I N D E X

#Ref	#Pages	#Ref	#Pages
3023SW	128	7003JK	90
3024DR	48	7004JK	92
3025SW	198	7005JK	94
3026SW	224	7006SW	204
		7007DR	50
4001SH	216	7008SW	206
4002SH	218	7009SK	116
4003SH	220	7010SW	150
4004SH	221	7011JK	70
4005SK	104	7012JK	96
4006DR	52	7013SW	208
4007SH	126	7014SW	210
4008PA	238	7015PA	270
4009PA	240	7016PA	266
4010JK	78	7017JK	84
4011DR	56		
		9001CO	12
5001SW	146	9002CO	2
5002JK	80	9003CO	4
5003JK	102	9004CO	6
5004DR	58	9005CO	14
5005CO	8	9006JK	20
5006SW	148	9007JK	22
5007JK	82	9008JK	98
5008SW	200	9009CO	16
		9010CO	18
6001PA	262	9011PA	242
6002SK	114	9012DR	60
6003PA	264	9013DR	62
6004JK	84	9014DR	64
6005PA	272	9015JK	24
6006JK	88		
6007SH	122		
6008DR	54		
7001CO	10		
7002SW	202		

[www.LOLITAS&L.com](http://www.LOLITAS&L.com)

